



Datasheet

Project:	Quantity:
Model #:	Approval:

For Commercial Use Only

CR60-10-LP Liquid Propane 60" Commercial Range, 10 Burner, 2 Oven - 362,000 BTU



FEATURES

- Stainless steel front, sides, back riser and shelf
- Cast iron open lift off burner, each 30,000 BTU/hr
- Thermostat (250°F- 550°F) controlled oven
- Welded frame structure for best stability
- Standby S/S pilot for easy start
- Casters standard, optional legs
- 12" x 12" cast iron grate
- Anti-clogging pilot cover under the grate
- A pull-out crumb tray with angled handle front
- U-Shape oven burner with 31,000 BTU/hr
- Thermal coupling safety valve for the oven
- Stainless steel oven door with good insulation
- Stainless steel handle for bottom oven
- Kick plate at the bottom for easy servicing
- Natural gas conversion kit included
- 3/4" NPT rear gas connection

- ETL US & Canada
- ETL Sanitation
- Conforms to NSF Standards



AEON DISTRIBUTORS LTD is a supplier of premium quality commercial cooking, refrigeration, and food preparation equipment. Our aim is simple. Produce industry-leading commercial restaurant equipment at reasonable prices, and back it all up with an easy-to-understand, no-nonsense warranty that people can count on.



AEON DISTRIBUTORS LTD

Tel: +1 868 360 2366 | aeondistributorstt.com | buy@aeondistributorstt.com

REV 2023-02

AEON Distributors Ltd reserves the right to change specifications without

**COOKLINE**

Datasheet

Project:	Quantity:
Model #:	Approval:

For Commercial Use Only

TECHNICAL DATA

DIMENSIONS

Exterior Dimensions	60"L x 32.6"D x 60"H
Oven Dimensions	26.6"L x 26"D x 13.9"H
Packaging Dimensions	65"L x 40"D x 44"H
Unit Weight	617 lb.
Shipping Weight	739 lb.

COOKING

Numbers of Burners	10
Per Burner BTU	30,000
Burner Style	Grates
Numbers of Oven	2
Numbers of Oven Racks	4
Per Oven BTU	31,000
Oven Style	Standard Oven
Max. Oven Temperature	550°F
Total BTU	362,000
Control Type	Manual
Gas Inlet Size	3/4"
Gas Type	Liquid Propane

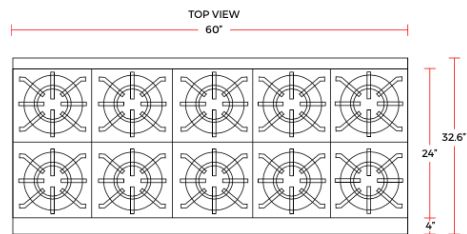
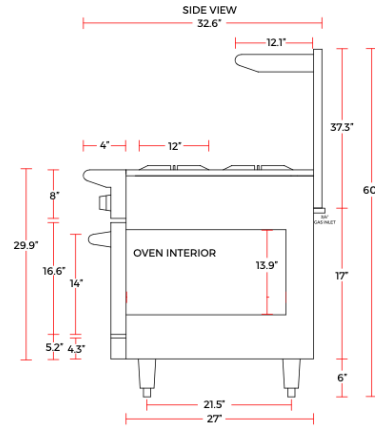
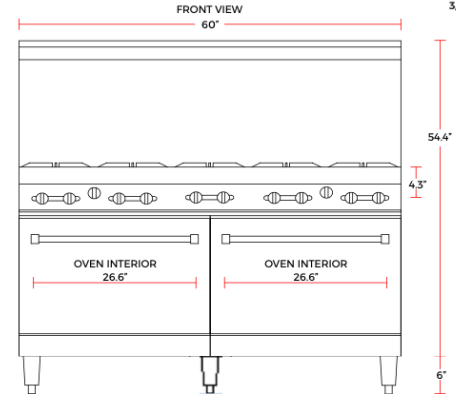
CONSTRUCTION

Exterior Material	Stainless Steel
Frame Structure	Welded
Number of Caster	(6) Qty: 3 with brakes, 3 without
Kick Plate Access	Yes
Pull Out Tray	Yes
Back Riser Shelf	Yes
Removable Grates	Yes

TECHNICAL DRAWING

MODEL: CR60-10-LP

MFR MODEL:

**AEON DISTRIBUTORS LTD**Tel: +1 868 360 2366 | aeondistributorstt.com | buy@aeondistributorstt.com

AEON Distributors Ltd reserves the right to change specifications without

REV 2023-02