



Datasheet

Project:	Quantity:
Model #:	Approval:

For Commercial Use Only

CB36 36" 2 Drawer Refrigerated Chef Base



FEATURES

- ▶ Holds temperature between 33°F to 41°F
- ▶ Stainless steel interior and exterior
- ▶ Aluminum finished back
- ▶ Stainless steel top equipped with a marine edge
- ▶ Preinstalled heavy-duty casters with brakes
- ▶ (2) Drawer capacity
- ▶ Heavy-duty pull handles
- ▶ Electronic control system
- ▶ Removable installation board
- ▶ HYDRO-CARBON R290 refrigerant

This Coldline chef base refrigerator is ideal for restaurants, bakeries, and cafes assorted refrigerated goods. Coldline chef base refrigerators are equipped with electronic temperature control to keep the product at the perfect refrigeration point. Heavy-duty pull handles, stainless steel top, stainless steel interior, and exterior all make this unit a reliable commercial refrigerator for any food service locale.

- cETLus Listed
 - ETL Sanitation Listed
- Conforms to UL & NSF Standards



AEON DISTRIBUTORS LTD is a supplier of premium quality commercial cooking, refrigeration, and food preparation equipment. Our aim is simple. Produce industry-leading commercial restaurant equipment at reasonable prices, and back it all up with an easy-to-understand, no-nonsense warranty that people can count on.



AEON DISTRIBUTORS LTD

Tel: +1 868 360 2366 | aeondistributorstt.com | buy@aeondistributorstt.com

AEON Distributors Ltd reserves the right to change specifications without

REV 2023-02



Datasheet

Project:	Quantity:
Model #:	Approval:

For Commercial Use Only

TECHNICAL DATA

DIMENSIONS

Exterior Dimensions	36.4"W x 32.1"D x 25.4"H
Interior Dimensions	24.6"W x 27.5"D x 16.5"H
Packaging Dimensions	39"W x 35"D x 28.5"H
Number of Drawers	2
4" Deep Pan Capacity	(1) Full-Size + (3) 1/6 Size
Top Thickness	1 3/4"
Net Volume	5.9 cu. ft.
Unit Weight	174 lb.
Shipping Weight	218 lb.

ELECTRICAL

Voltage	115
Hertz	60
Phase	1
Amps	2.52
Plug Type	NEMA 5-15P
Power Cord Length	84"

COOLING

Temperature Range	33°F to 41°F
Refrigerant	R290
Max. Ambient Temp	90°F
Defrosting	Automatic
Temperature Controller	Digital
Horsepower	1/6

CONSTRUCTION

Exterior Material	Stainless Steel
Interior Material	Stainless Steel
Insulation Material	Foamed-in-Place Polyurethane
Top Edge Type	Marine
Top Weight Capacity	730 lb.
Mobility Wheels/Casters	(4) Qty: 2 with brakes, 2 without

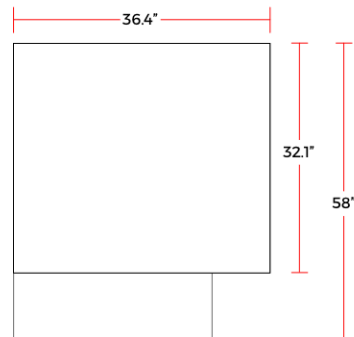
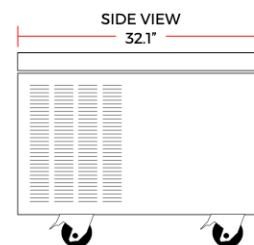
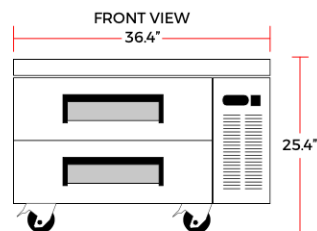
DIAGRAM

MODEL:CB36

MFR MODEL:CB-36-HC



NEMA 5-15P



AEON DISTRIBUTORS LTD

Tel: +1 868 360 2366 | aeondistributorstt.com | buy@aeondistributorstt.com

AEON Distributors Ltd reserves the right to change specifications without

REV 2023-02